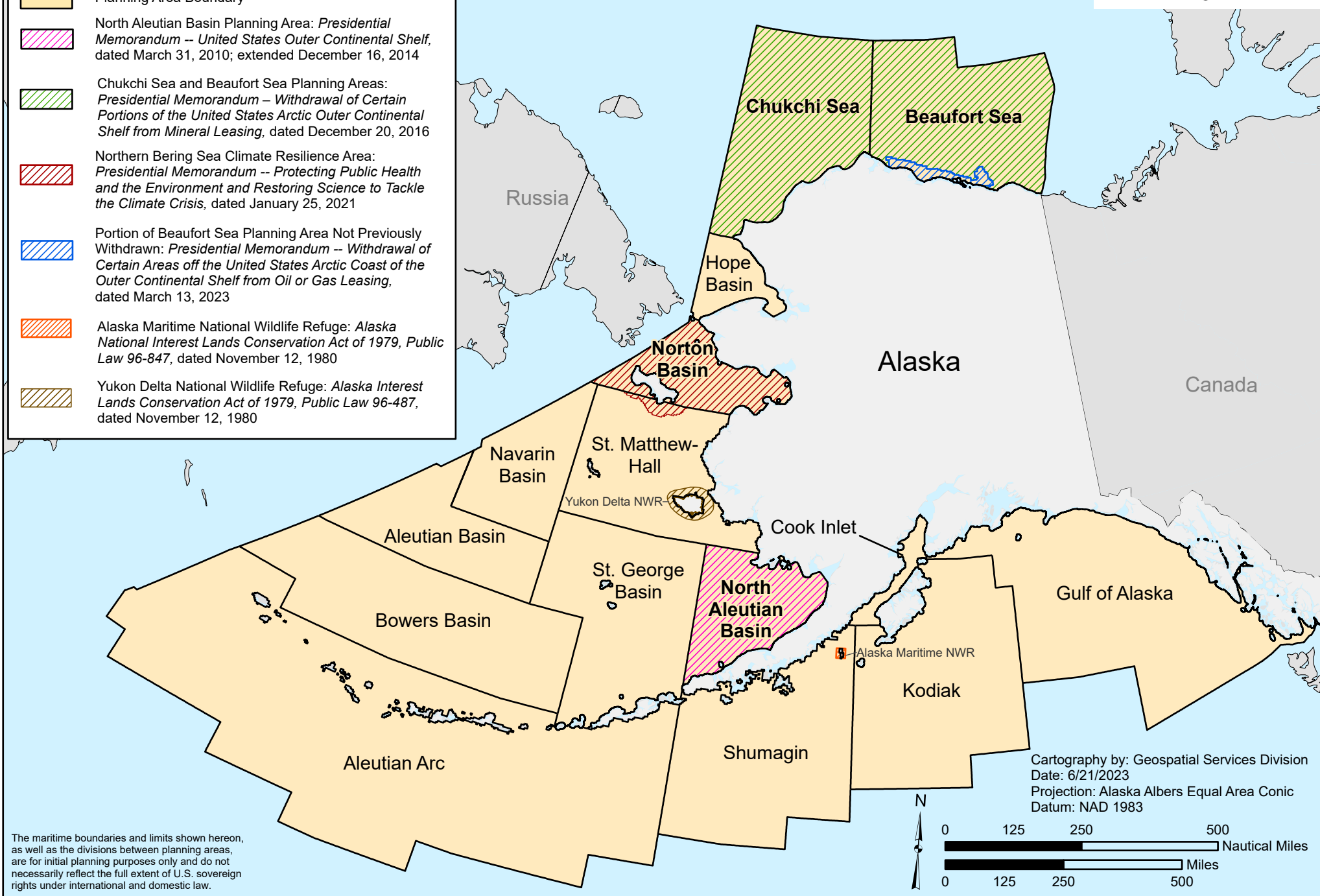


Areas Withdrawn from the Alaska Planning Areas

-  Planning Area Boundary
-  North Aleutian Basin Planning Area: *Presidential Memorandum -- United States Outer Continental Shelf*, dated March 31, 2010; extended December 16, 2014
-  Chukchi Sea and Beaufort Sea Planning Areas: *Presidential Memorandum -- Withdrawal of Certain Portions of the United States Arctic Outer Continental Shelf from Mineral Leasing*, dated December 20, 2016
-  Northern Bering Sea Climate Resilience Area: *Presidential Memorandum -- Protecting Public Health and the Environment and Restoring Science to Tackle the Climate Crisis*, dated January 25, 2021
-  Portion of Beaufort Sea Planning Area Not Previously Withdrawn: *Presidential Memorandum -- Withdrawal of Certain Areas off the United States Arctic Coast of the Outer Continental Shelf from Oil or Gas Leasing*, dated March 13, 2023
-  Alaska Maritime National Wildlife Refuge: *Alaska National Interest Lands Conservation Act of 1979, Public Law 96-847*, dated November 12, 1980
-  Yukon Delta National Wildlife Refuge: *Alaska Interest Lands Conservation Act of 1979, Public Law 96-487*, dated November 12, 1980



The maritime boundaries and limits shown hereon, as well as the divisions between planning areas, are for initial planning purposes only and do not necessarily reflect the full extent of U.S. sovereign rights under international and domestic law.